

# DELTA-B

## HAZARDOUS LOCATION LED

20W, 40W, 60W, 80W, 100W, 150W, 180W, 200W  
HAZARDOUS LOCATION LED

PROJECT

CATALOG #

TYPE

Rev: 06/06/2019



- Class I - Div 1: Groups C, D
- Class I - Div 2: Groups A, B, C, D
- Class II - Div 1: Groups E, F, G
- Class II - Div 2: Group E, F, G
- Class III
- UL 1598A Marine Listed
- UL 844
- IP66 & IK10 Rated



### POWER

Available from 20W up to 200W Configurations

### PRECISION

Custom-Engineered Optics Offer Precisely Directed Light

### ENGINEERING

A383 Die Cast Aluminum Housing and Tempered Glass Lens

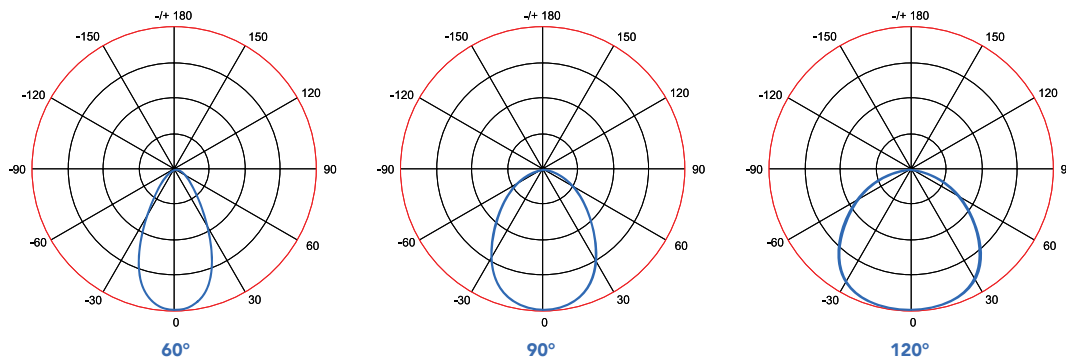
### ORDERING INFORMATION

EXAMPLE PART #: DELB - 100 - 40K - 40 - V01 - GR - PM - NDIM

DELB					GR		
SERIES	WATTS	CCT	OPTICS	INPUT PWR	FINISH	MOUNTING	DIMMING
DELB	20	35K*	60	V01   110/277V	GR	TM   Trunnion Mount (Wall, Ceiling & Floor)	NDIM   No Dimming
	40	40K	90	V04   347/480V		PM   Pendant Mount**	VDIM   0-10V Dimmable
	60	50K	120			JBT   Junction Box w/Pendant**	
	80	57K				WM25   25° Wall Mount & Junction Box: 3/4" NPT**	
	100					WM90   90° Wall Mount & Junction Box: 3/4" NPT**	
	150					WM90S   90° Wall Mount**	
	180					PL25   25° Pole Mount: 1-1/2" NPT**	
	200					PL90   90° Pole Mount: 1-1/2" NPT**	

- NOTES**
- 20W, 40W, 60W & 80W Only Available in V01 110/277V
  - \*35K Available; Please Consult Factory for Lead Times
  - \*\*Mounting Not Available in 100W, 150W, 180W & 200W

### OPTICS



# DELTA-B

## HAZARDOUS LOCATION LED

### SPECIFICATIONS

**Expected Life** | Over 85,000 hrs.  
**Rating** | IP66 & IK10  
**Color Rendering Index (CRI)** | 70  
**Operating Temp** | 20-150W: -40°C to +55°C  
 180-200W: -40°C to +45°C  
**Relative Humidity** | 10-90% RH  
**Power Factor** | >.95  
**Input Line Voltage** | 90-305 / 200-525 VAC  
**Input Line Frequency** | 50/60 Hz  
**LED Chips** | Philips  
**Driver** | Meanwell  
**Surge Protection** | 10KV  
**DC Output Ripple & Noise** | <200mVP-P  
**T-Rating** | T4

### LISTINGS

**UL 1598A Marine Listed**  
**UL 1598 Listed**  
**UL 844 Listed**  
 -Class I, Division 1, Groups C,D  
 -Class I, Division 2, Groups A,B,C,D  
 -Class II, Division 1, Groups E,F,G  
 -Class II, Division 2, Groups E,F,G  
 -Class III

### MATERIALS

**Housing** | A383 Die Cast Aluminum  
**Gasketing** | Fluorosilicone Rubber  
**Hardware** | Stainless Steel 304  
**Finish** | Polyester Powdercoat  
**Lens** | Tempered Glass

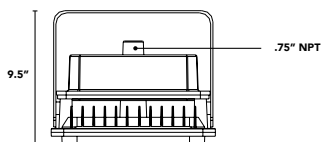
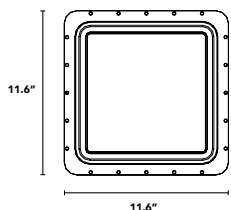
### LUMEN CHART

	3500K	4000K	5000K	5700K
<b>20W</b>	2,400 lm	2,560 lm	2,700 lm	2,800 lm
<b>40W</b>	4,800 lm	5,120 lm	5,400 lm	5,600 lm
<b>60W</b>	7,200 lm	7,680 lm	8,100 lm	8,400 lm
<b>80W</b>	9,600 lm	10,240 lm	10,800 lm	11,200 lm
<b>100W</b>	12,000 lm	12,800 lm	13,500 lm	14,000 lm
<b>150W</b>	18,000 lm	19,200 lm	20,250 lm	21,000 lm
<b>180W</b>	21,600 lm	23,040 lm	24,300 lm	25,200 lm
<b>200W</b>	24,000 lm	25,600 lm	27,000 lm	28,000 lm

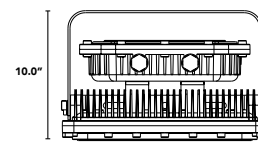
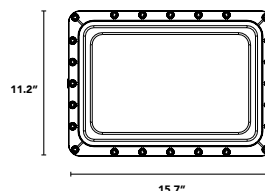
Typical delivered lumen data is approximate. Actual lumens will vary due to installation environment and beam pattern. Please see IES files.

### PRODUCT DRAWINGS

20W - 40W - 60W - 80W



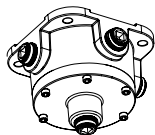
100W - 150W - 180W - 200W



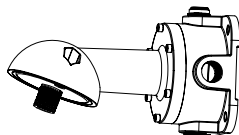
### ADDITIONAL MOUNTING OPTIONS

Mounting Options Below are Not Available in 100W, 150W, 180W, & 200W

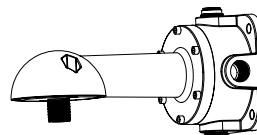
**JBT: Junction Box w/ Pendant**



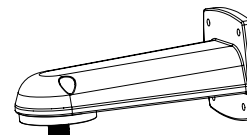
**WM25: 25° Wall Mount & Junction Box**



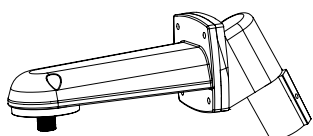
**WM90: 90° Wall Mount & Junction Box**



**WM90S: 90° Wall Mount**



**PL25: 25° Pole Mount**



**PL90: 90° Pole Mount**

