

# TAURUS-B

## HAZARDOUS LOCATION LED

**10W, 20W, 30W, 40W**  
HAZARDOUS LOCATION LED

- Class I - Div 1: Groups C, D
- UL 1598A Marine Listed
- UL 1598 Wet Location Listed
- IP66 Rated
- IK10 Rated

PROJECT

CATALOG #

TYPE

Rev: 06/06/2019



TAUB Shown With Optional DL Drop Lens



### POWER

Available in 10W, 20W, 30W and 40W Configurations

### PRECISION

Custom-Engineered Optics Offer Precisely Directed Light

### ENGINEERING

A383 Die Cast Aluminum Housing and Tempered Glass Lens

### ORDERING INFORMATION

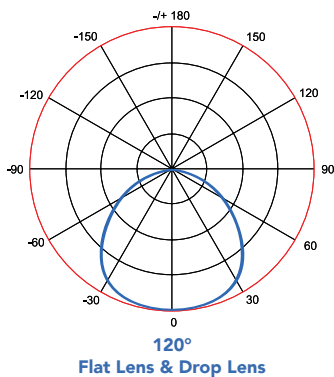
EXAMPLE PART #: TAUB - 20 - 40K - 120 - V01 - GR - CM - NDIM - DL

TAUB			120		GR				
SERIES	WATTS	CCT	OPTICS	INPUT PWR	FINISH	MOUNTING		DIMMING	LENS
TAUB	10 20 30 40	35K* 40K 50K 57K	120	V01   110/277V	GR	CM   Ceiling Mount PM   Pendant Mount JBT   Junction Box w/Pendant WM25   25° Wall Mount & Junction Box: 3/4" NPT WM90   90° Wall Mount & Junction Box: 3/4" NPT WM90S   90° Wall Mount PL25   25° Pole Mount: 1-1/2" NPT PL90   90° Pole Mount: 1-1/2" NPT	NDIM   No Dimming VDIM   0-10V Dimmable	DL   Drop Lens FL   Flat Lens	

#### NOTES

- DL Drop Lens Includes Wire Guard
- \*35K Available; Please Consult Factory for Lead Times

### OPTICS



Due to continuous improvement and innovation, product appearance and specifications may change without notice. Actual performance may differ as a result of end-user environment and application.

# TAURUS-B

## HAZARDOUS LOCATION LED

### SPECIFICATIONS

Expected Life | Over 85,000 hrs.  
 Rating | IP66 & IK10  
 Color Rendering Index (CRI) | 70  
 Operating Temp | -40°C – +65°C  
 Relative Humidity | 10-90% RH  
 Power Factor | >.95  
 Input Line Voltage | 90-305  
 Input Line Frequency | 50/60 Hz  
 LED Chips | Philips  
 Driver | Meanwell  
 Surge Protection | 10KV  
 DC Output Ripple & Noise | <200mVP-P  
 T-Rating | T4

### LISTINGS

UL 1598A Marine Listed  
 UL 1598 Listed  
 UL 844 Listed  
 -Class I, Division 1, Groups C,D

### MATERIALS

Housing | A383 Die Cast Aluminum  
 Gasketing | Fluorosilicone Rubber  
 Hardware | Stainless Steel 304  
 Finish | Polyester Powdercoat  
 Lens | Tempered Glass

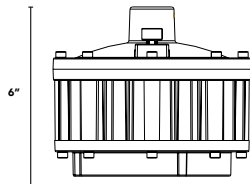
### LUMEN CHART

	3500K	4000K	5000K	5700K
10W	1,200 lm	1,280 lm	1,350 lm	1,400 lm
20W	2,400 lm	2,560 lm	2,700 lm	2,800 lm
30W	3,600 lm	3,840 lm	4,050 lm	4,200 lm
40W	4,800 lm	5,120 lm	5,400 lm	5,600 lm

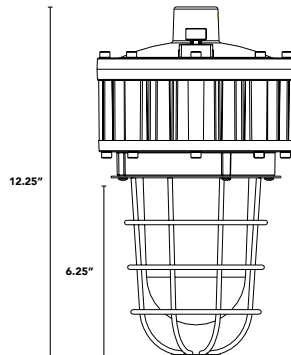
Typical delivered lumen data is approximate. Actual lumens will vary due to installation environment and beam pattern. Please see IES files.

### PRODUCT DRAWINGS

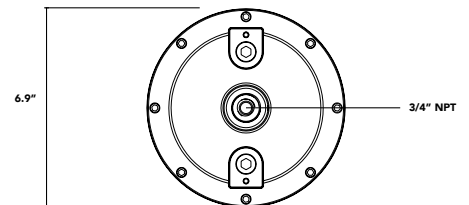
Flat Lens w/ Pendant Mount



Drop Lens with Wire Guard w/ Pendant Mount

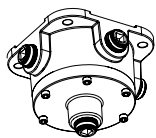


Ceiling Mounting Plate

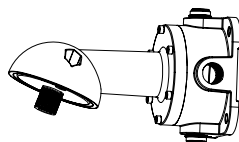


### ADDITIONAL MOUNTING OPTIONS

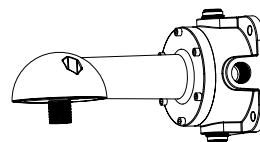
JBT: Junction Box w/ Pendant



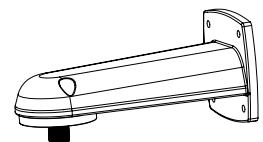
WM25: 25° Wall Mount & Junction Box



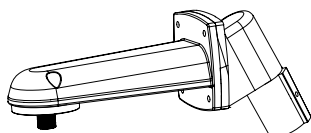
WM90: 90° Wall Mount & Junction Box



WM90S: 90° Wall Mount



PL25: 25° Pole Mount



PL90: 90° Pole Mount

