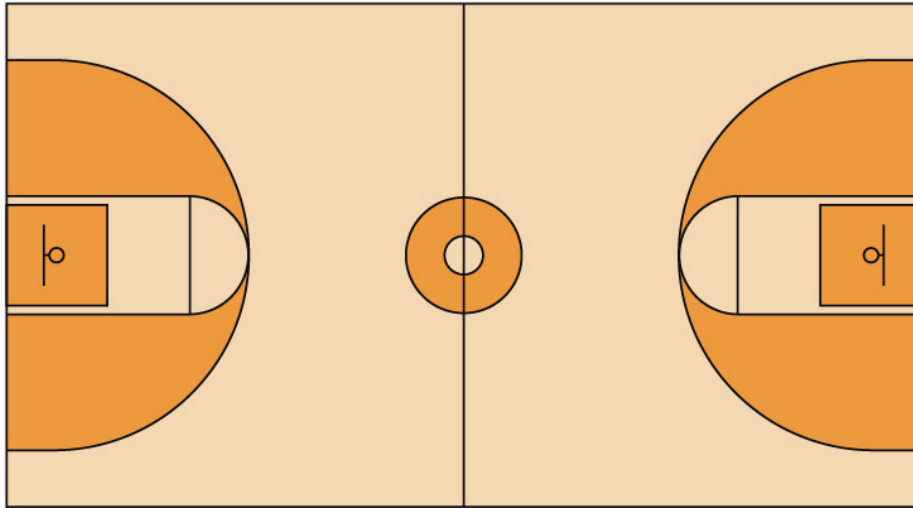
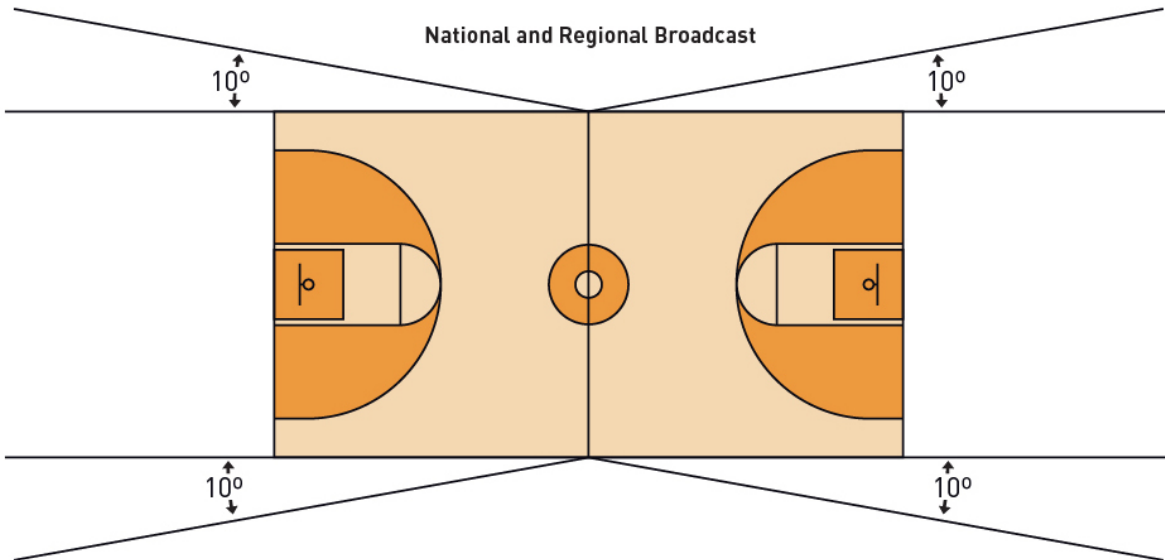


Standard Intercollegiate Play



National and Regional Broadcast



1. For new facilities or upgrades, it is recommended to consult a lighting professional for optimal luminaire placement and catwalk locations.
2. Optimal luminaire placement, mounting heights, and catwalk locations will impact playability and minimize glare and skip glare.
3. To achieve required vertical footcandles, some lights must be mounted beyond the sides of the court.
4. As a general rule, due to mounting heights, lower wattage luminaires are used, commonly 1000 watt.
5. No luminaires are recommended in shaded areas directly aimed to the field of play.

	Light Levels			Uniformity Ratios	
	Horizontal Footcandles	Vertical Footcandles (to center main side camera)	Verticle Footcandles (to end line camera)	Horizontal	Vertical
NCAA standard collegiate	80	-	-	2.0:1	-
NCAA Regional Broadcast	80	75	45	2.0:1	2.0:1
NCAA National Broadcast	100	100	60	1.7:1	1.7:1
NCAA National Championship Final	125	125	75	1.5:1	2.5:1
High School Class I	100	-	-	-	-
High School Class II	30	-	-	-	-
High School Class III	30	-	-	-	-
High School Class IV	30	-	-	-	-
High School Class V	30	-	-	-	-

Summary: Following these recommended best practices will ensure quality of light needed for the safety of participants and the enjoyment of spectators, as required.