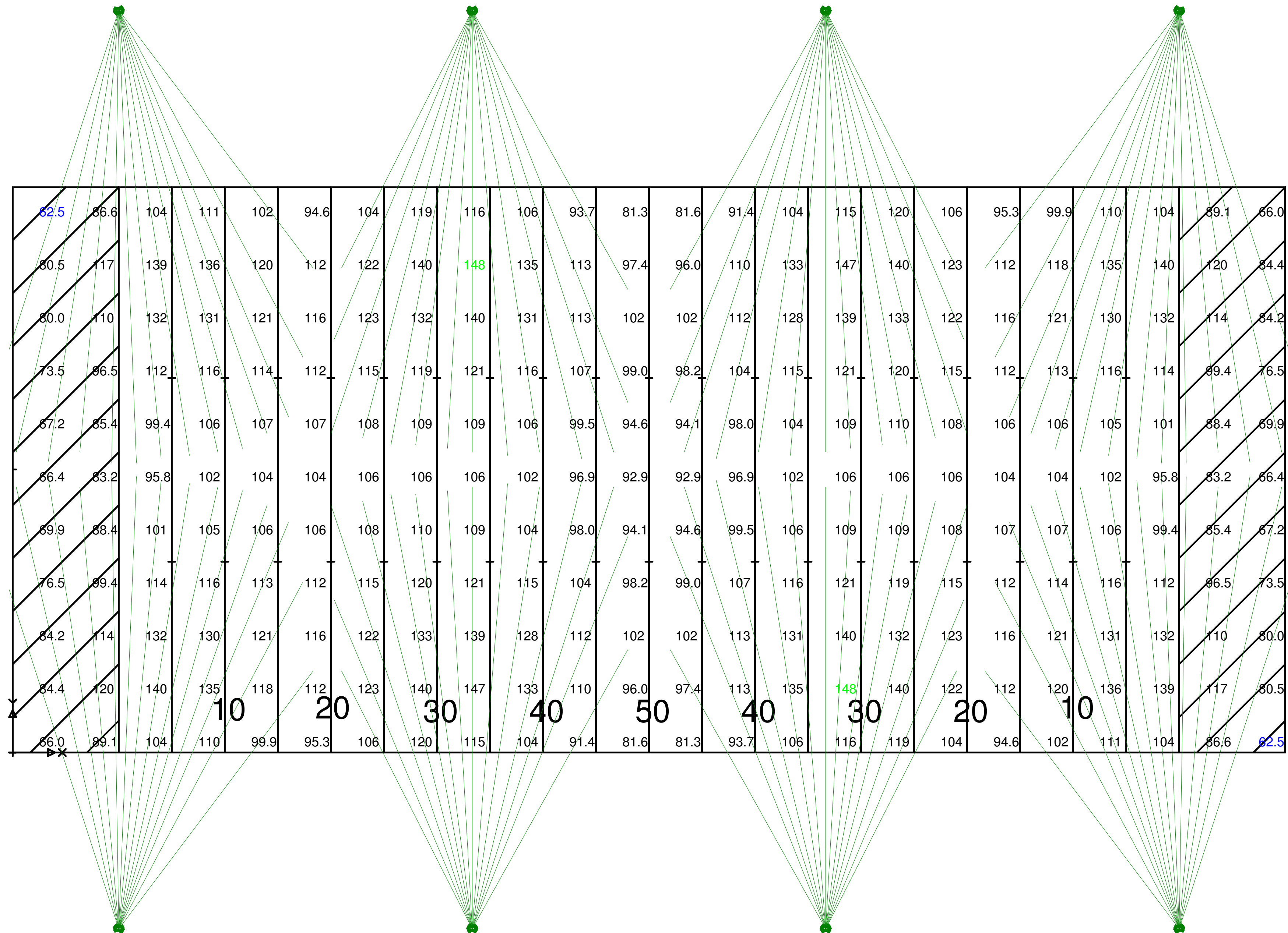


Luminaire Schedule							
Symbol	Qty	Label	Arrangement	Total Lamp Lumens	LLF	Mfg.	Description
☐	112	F5	SINGLE	107882	0.910	SpecGrade LED	AFL1000-40X40

Class I

70' Mounting Height
Pole Setback: 50'
AFL1000-40X40
Avg.: 108.37
Max: 148
Min: 62.5
Avg/Min: 1.73
Max/Min: 2.37

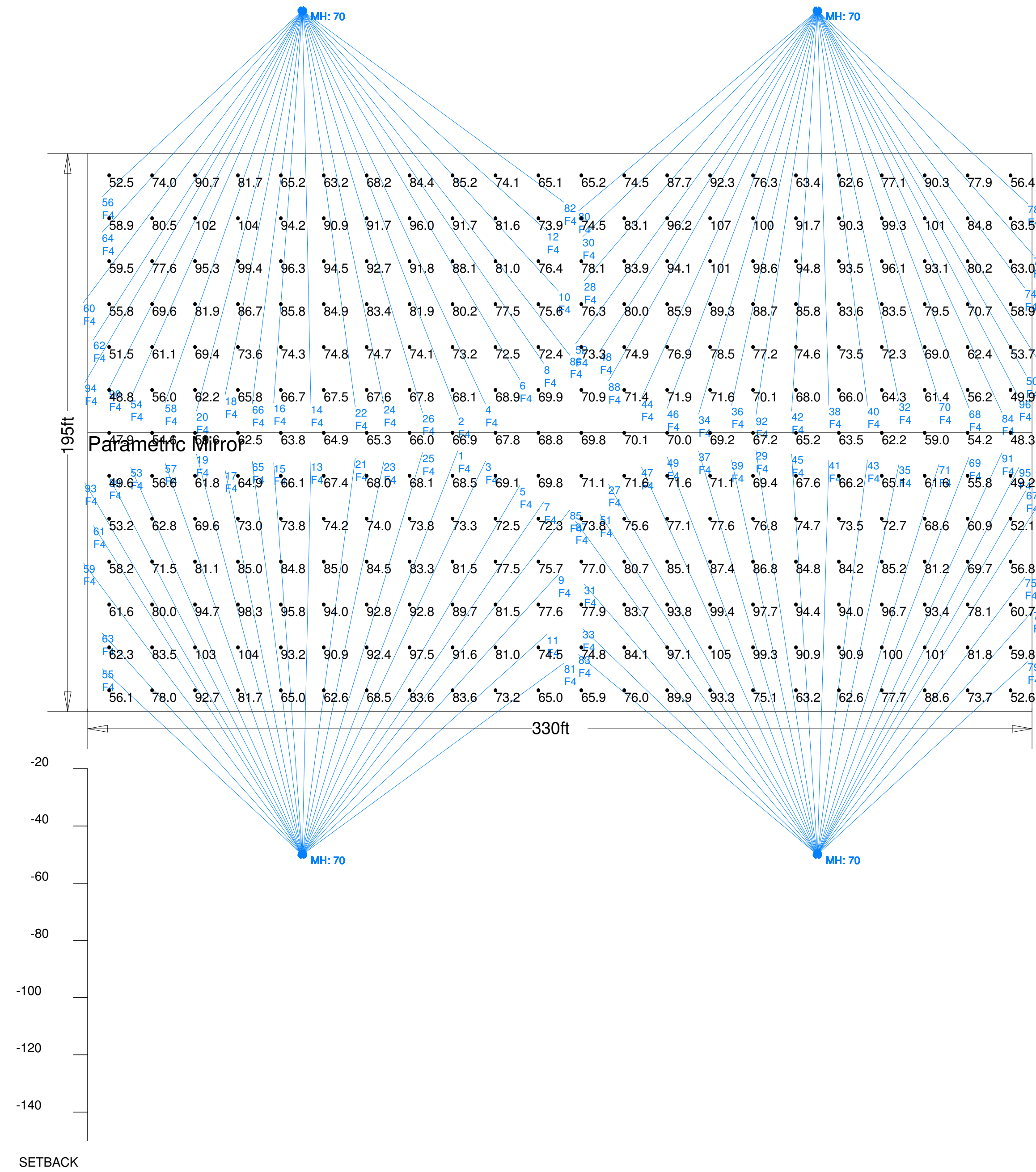


Illumination results shown on this lighting design are based on project parameters provided to SpecGrade LED and used in conjunction with test procedures conducted under laboratory conditions. Actual project conditions differing from these design parameters may affect field results. Values represent an approximation and actual field results may vary.

Luminaire Schedule							
Symbol	Qty	Label	Arrangement	Total Lamp Lumens	LLF	Mfg.	Description
☐	96	F4	SINGLE	107882	0.910	SpecGrade LED	AFL100040X40

Calculation Summary										
Label	CalcType	Units	Avg	Max	Min	Avg/Min	Max/Min	PtSpcLr	PtSpcTb	
Soccer Field	Illuminance	Fc	76.52	107	47.9	1.60	2.22	15	15	

Calculation grid 3' above field.



Luminaire Location Summary								
LumNo	Label	X	Y	Z	Orient	Tilt	X-Aimpt	Y-Aimpt
1	F4	75	-50	70	68.935	65.22	129.5	91.5
2	F4	75	245	70	291.065	65.22	129.5	103.5
3	F4	75	-50	70	65.04	65.225	139	87.5
4	F4	75	245	70	294.96	65.225	139	107.5
5	F4	75	-50	70	59.496	64.943	151.001	79.003
6	F4	75	245	70	300.504	64.943	151.001	115.997
7	F4	75	-50	70	55.62	64.93	159.5	73.5
8	F4	75	245	70	304.38	64.93	159.5	121.5
9	F4	75	-50	70	47.596	62.191	164.5	48
10	F4	75	245	70	312.404	62.191	164.5	147
11	F4	75	-50	70	42.006	58.685	160.5	27
12	F4	75	245	70	317.994	58.685	160.5	168
13	F4	75	-50	70	88.75	63.025	78	87.5
14	F4	75	245	70	271.25	63.025	78	107.5
15	F4	75	-50	70	94.175	62.997	65	87
16	F4	75	245	70	265.825	62.997	65	108
17	F4	75	-50	70	101.351	62.966	48	84.5
18	F4	75	245	70	258.649	62.966	48	110.5
19	F4	75	-50	70	104.804	64.201	38	90
20	F4	75	245	70	255.196	64.201	38	105
21	F4	75	-50	70	82.392	63.391	93.5	88.5
22	F4	75	245	70	277.608	63.391	93.5	106.5
23	F4	75	-50	70	78.29	63.504	103.5	87.5
24	F4	75	245	70	281.71	63.504	103.5	107.5
25	F4	75	-50	70	73.357	64.483	117	90.5
26	F4	75	245	70	286.643	64.483	117	104.5
27	F4	255	-50	70	119.41	64.785	182	79.5
28	F4	255	245	70	229.224	60.71	173.5	150.5
29	F4	255	-50	70	98.64	63.937	233.5	91.5
30	F4	255	245	70	223.933	58.418	173	166
31	F4	255	-50	70	130.776	60.71	173.5	44.5
32	F4	255	245	70	281.793	63.344	283.5	108.5
33	F4	255	-50	70	136.067	58.418	173	29
34	F4	255	245	70	253.599	64.534	213.5	104
35	F4	255	-50	70	78.207	63.344	283.5	86.5
36	F4	255	245	70	257.735	63.344	225	107
37	F4	255	-50	70	106.401	64.534	213.5	91
38	F4	255	245	70	271.66	63.113	259	107
39	F4	255	-50	70	102.265	63.634	225	88
40	F4	255	245	70	277.227	63.288	272.5	107
41	F4	255	-50	70	88.34	63.113	259	88
42	F4	255	245	70	266.322	63.482	246	105
43	F4	255	-50	70	82.773	63.288	272.5	88
44	F4	255	245	70	245.588	64.807	193.5	109.5
45	F4	255	-50	70	93.678	63.482	246	90
46	F4	255	245	70	249.309	64.774	202.5	106
47	F4	255	-50	70	114.412	64.807	193.5	85.5
48	F4	255	245	70	237.435	63.63	179	126

Luminaire Location Summary									
LumNo	Label	X	Y	Z	Orient	Tilt	X-Aimpt	Y-Aimpt	
49	F4	255	-50	70	110.691	64.774	202.5	89	
50	F4	255	245	70	299.793	64.524	328	117.5	
51	F4	255	-50	70	122.565	63.63	179	69	
52	F4	255	245	70	234.046	64.062	170.502	128.501	
53	F4	75	-50	70	113.884	64.715	15	85.5	
54	F4	75	245	70	246.116	64.715	15	109.5	
55	F4	75	-50	70	137.121	53.766	5	15	
56	F4	75	245	70	222.879	53.766	5	180	
57	F4	75	-50	70	109.309	64.256	27	87	
58	F4	75	245	70	250.691	64.256	27	108	
59	F4	75	-50	70	126.87	61.232	-1.5	52	
60	F4	75	245	70	233.13	61.232	-1.5	143	
61	F4	75	-50	70	122.407	62.801	2	65	
62	F4	75	245	70	237.593	62.801	2	130	
63	F4	75	-50	70	132.089	56.167	4.999	27.501	
64	F4	75	245	70	227.911	56.167	4.999	167.499	
65	F4	75	-50	70	97.253	63.205	57.5	87.5	
66	F4	75	245	70	262.747	63.205	57.5	107.5	
67	F4	255	-50	70	60.207	64.524	328	77.5	
68	F4	255	245	70	290.872	64.801	308	106	
69	F4	255	-50	70	69.128	64.801	308	89	
70	F4	255	245	70	287.294	63.912	297.5	108.5	
71	F4	255	-50	70	72.706	63.912	297.5	86.5	
72	F4	255	245	70	302.258	64.117	332	123	
73	F4	255	-50	70	57.742	64.117	332	72	
74	F4	255	245	70	306.775	59.971	327.5	148	
75	F4	255	-50	70	53.225	59.971	327.5	47	
76	F4	255	245	70	311.446	58.463	330.5	159.5	
77	F4	255	-50	70	48.554	58.463	330.5	35.5	
78	F4	255	245	70	317.437	54.952	328.5	177.5	
79	F4	255	-50	70	42.563	54.952	328.5	17.5	
80	F4	255	245	70	219.974	57.282	171.5	175	
81	F4	75	-50	70	36.213	58.315	166.5	17	
82	F4	75	245	70	323.787	58.315	166.5	178	
83	F4	255	-50	70	140.026	57.282	171.5	20	
84	F4	255	245	70	294.659	65.64	319.502	104.498	
85	F4	75	-50	70	52.191	65.347	168.5	70.5	
86	F4	75	245	70	307.809	65.347	168.5	124.5	
87	F4	255	-50	70	125.954	64.062	170.502	66.499	
88	F4	255	245	70	240.59	64.785	182	115.5	
89	F4	75	-50	70	117.084	64.726	7.5	82	
90	F4	75	245	70	242.916	64.726	7.5	113	
91	F4	255	-50	70	65.341	65.64	319.502	90.502	
92	F4	255	245	70	261.36	63.937	233.5	103.5	
93	F4	75	-50	70	120.311	65.069	-1.001	80.003	
94	F4	75	245	70	239.689	65.069	-1.001	114.997	
95	F4	255	-50	70	62.512	65.379	325.502	85.501	
96	F4	255	245	70	297.488	65.379	325.502	109.499	

Class II

50' Mounting Height

Pole Setback: 20'

AFL600-60X60

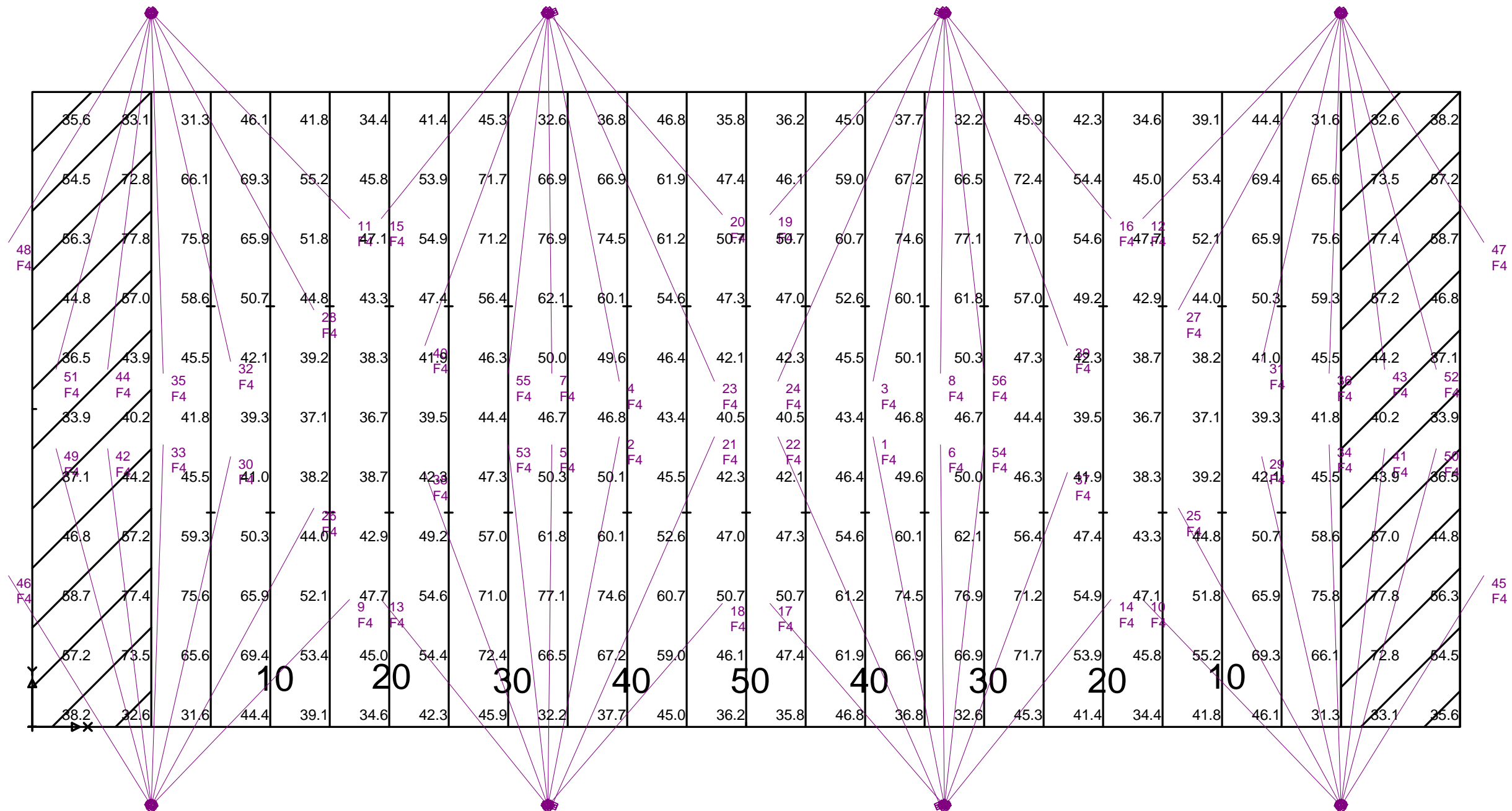
Avg:: 50.78

Max: 77.8

Min: 31.3

Avg/Min: 1.62

Max/Min: 2.49



Class III:

50' Mounting Height

{Pole Setback: 20'

AFL600-60X60

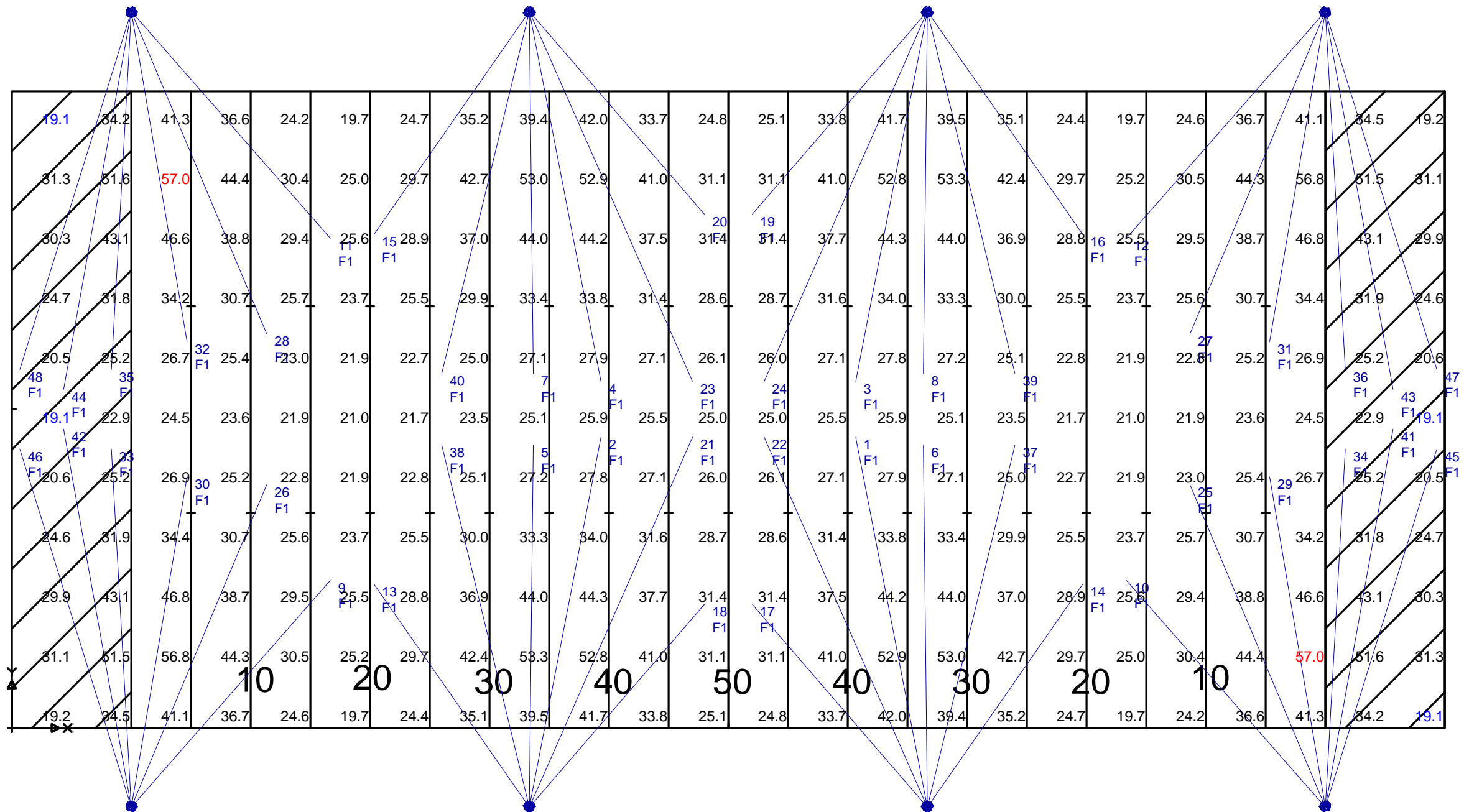
Avg:: 31.73

Max: 57.0

Min: 19.1

Avg/Min: 1.66

Max/Min: 2.98



Class IV:

50' Mounting Height

Pole Setback: 20'

AFL600-60X60

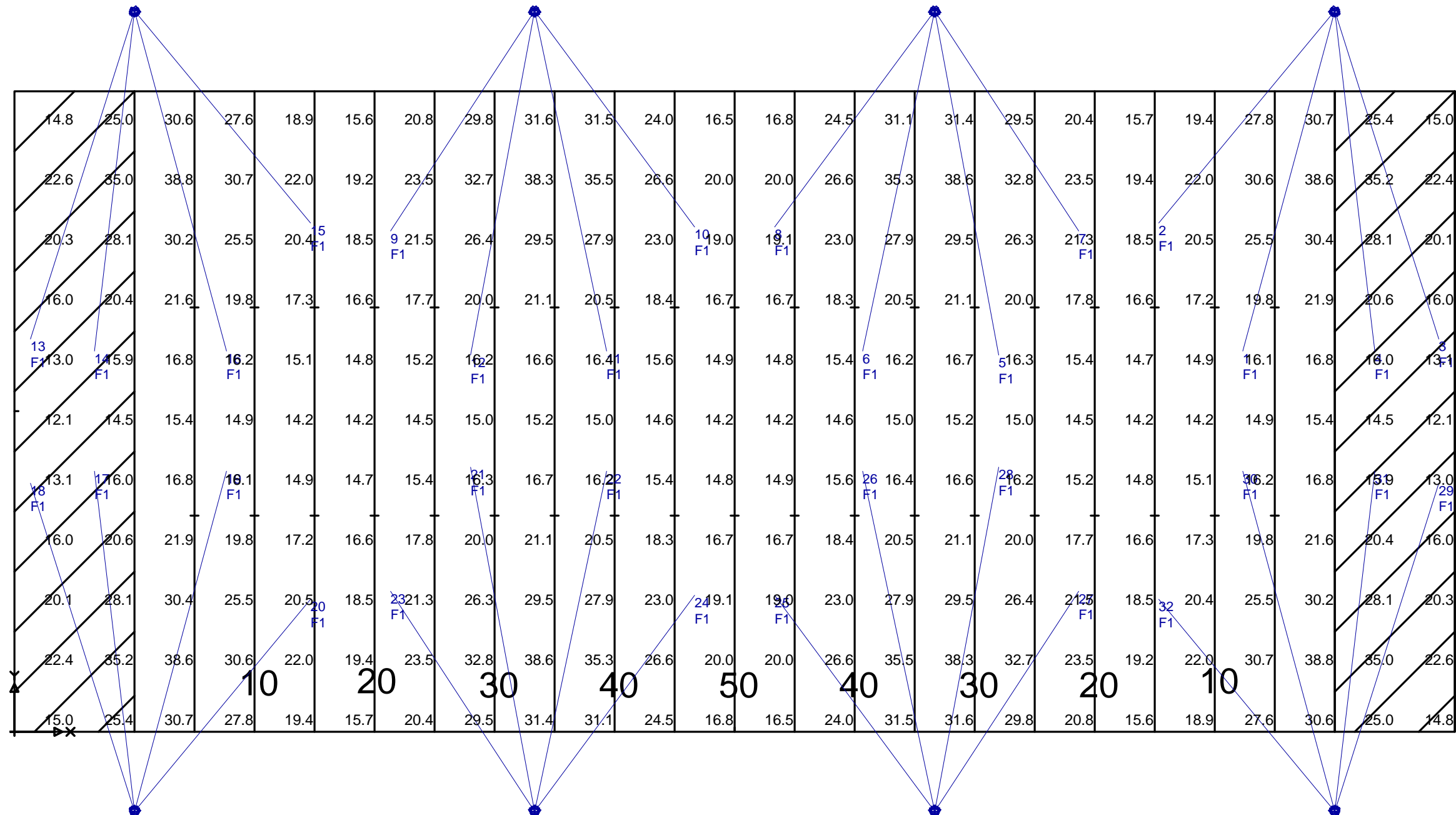
Avg:: 21.55

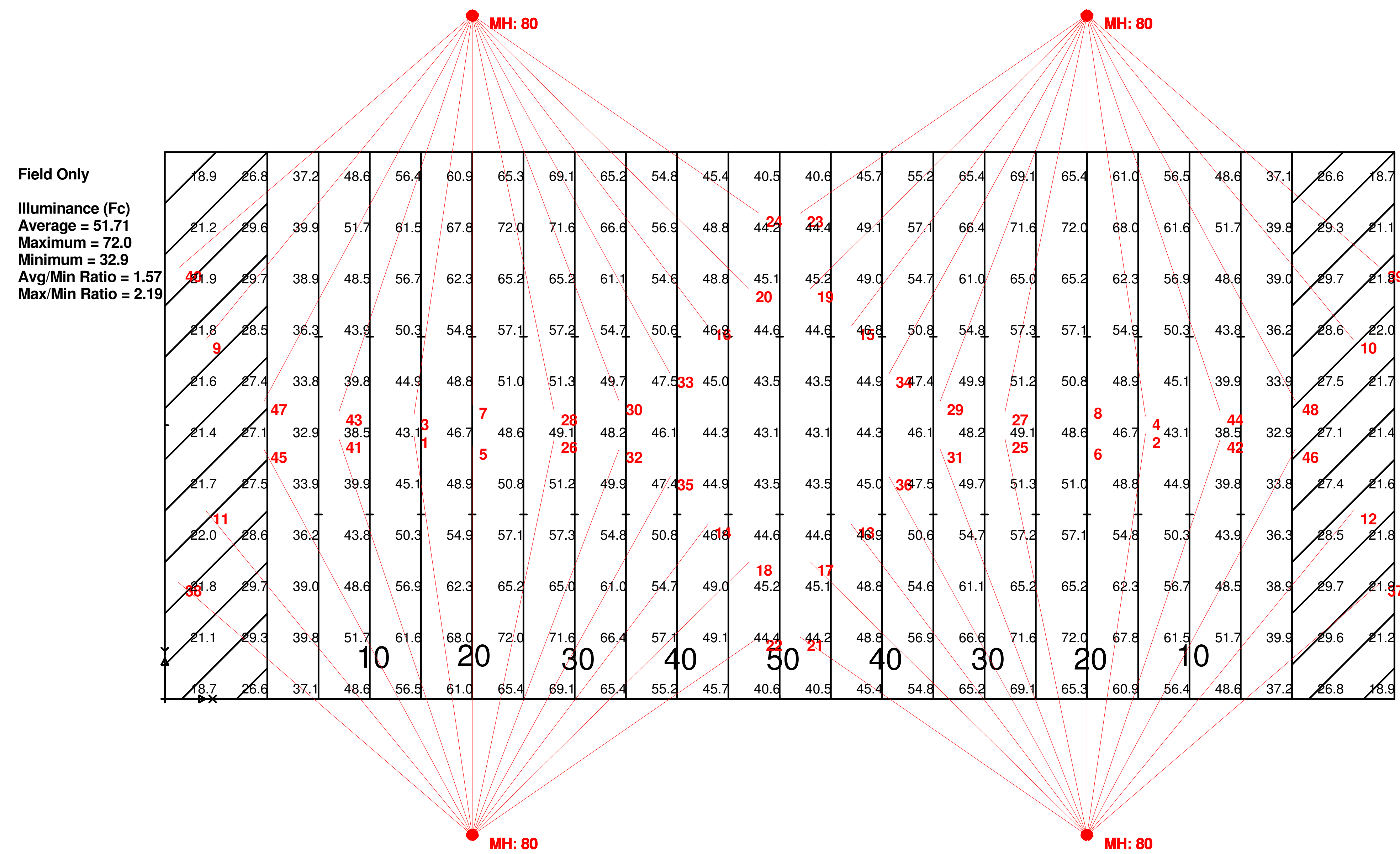
Max: 38.8

Min: 12.1

Avg/Min: 1.78

Max/Min: 3.21



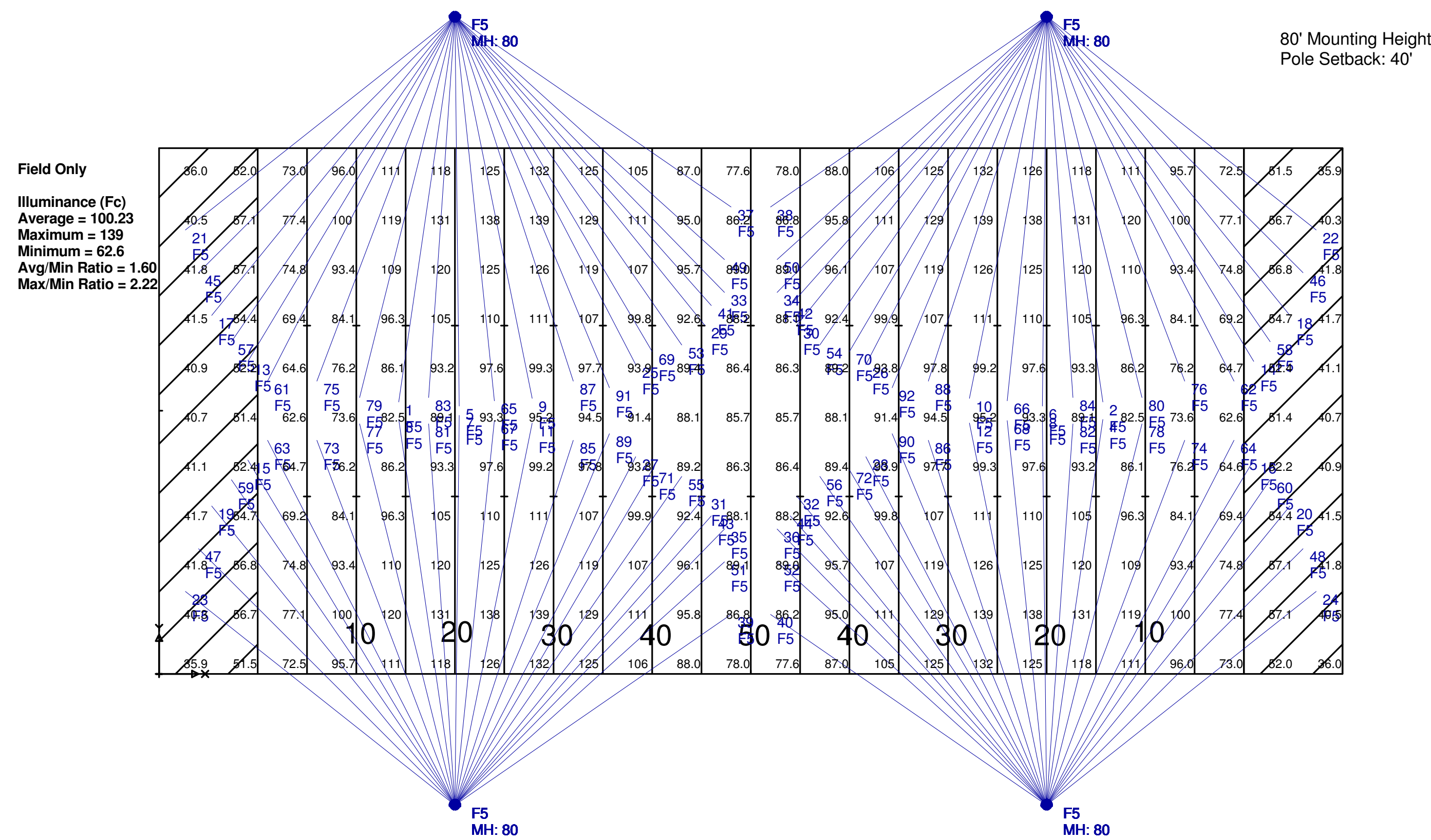


Fixture Schedule							
Symbol	Qty	Label	Arrangement	Total Lamp Lumens	LLF	Description	Lum. Watts
□	48	F5	SINGLE	112537	0.912	AFL100060X60	1100

Calculation Summary									
Label	CalcType	Units	Avg	Max	Min	Avg/Min	Max/Min	PtSpcLr	PtSpcTb
Football Field	Illuminance	Fc	47.21	72.0	18.7	2.52	3.85	15	15
Field Only	Illuminance	Fc	51.71	72.0	32.9	1.57	2.19		

Luminaire Location Summary						
LumNo	Label	X	Y	Z	Orient	Tilt
1	F5	90	-40	80	98.297	56
2	F5	270	-40	80	81.703	56
3	F5	90	200	80	261.703	56
4	F5	270	200	80	278.297	56
5	F5	90	-40	80	90	54.941
6	F5	270	-40	80	90	54.941
7	F5	90	200	80	270	54.941
8	F5	270	200	80	270	54.941
9	F5	90	200	80	230.612	56.942
10	F5	270	200	80	309.388	56.942
11	F5	90	-40	80	129.388	56.942
12	F5	270	-40	80	50.612	56.942
13	F5	270	-40	80	127.171	54.988
14	F5	90	-40	80	52.829	54.988
15	F5	270	200	80	232.829	54.988
16	F5	90	200	80	307.171	54.988
17	F5	270	-40	80	135.356	54.904
18	F5	90	-40	80	44.644	54.904
19	F5	270	200	80	224.644	54.904
20	F5	90	200	80	315.356	54.904
21	F5	270	-40	80	145.376	51.914
22	F5	90	-40	80	34.624	51.914
23	F5	270	200	80	214.624	51.914
24	F5	90	200	80	325.376	51.914
25	F5	270	-40	80	101.689	55.967
26	F5	90	-40	80	78.311	55.967
27	F5	270	200	80	258.311	55.967
28	F5	90	200	80	281.689	55.967
29	F5	270	200	80	249.167	56.508
30	F5	90	200	80	290.833	56.508
31	F5	270	-40	80	110.833	56.508
32	F5	90	-40	80	69.167	56.508
33	F5	90	200	80	298.915	56.3
34	F5	270	200	80	241.085	56.3
35	F5	90	-40	80	61.085	56.3
36	F5	270	-40	80	118.915	56.3
37	F5	270	-40	80	40.711	54.811
38	F5	90	-40	80	139.289	54.811
39	F5	270	200	80	319.289	54.811
40	F5	90	200	80	220.711	54.811
41	F5	90	-40	80	108.583	56.827
42	F5	270	-40	80	71.417	56.827
43	F5	90	200	80	251.417	56.827
44	F5	270	200	80	288.583	56.827
45	F5	270	-40	80	118.361	58.078
46	F5	270	-40	80	61.639	58.078
47	F5	90	200	80	241.639	58.078
48	F5	270	200	80	298.361	58.078

80' Mounting Height
Pole Setback: 40'



Symbol	Qty	Label	Arrangement	Total Lamp Lumens	LLF	Description	Lum. Watts
[Symbol]	92	F5	SINGLE	112537	0.912	AFL100060X60	1100

Label	CalcType	Units	Avg	Max	Min	Avg/Min	Max/Min	PtSpcLr	PtSpcTb
Football Field	Illuminance	Fc	91.40	139	35.9	2.55	3.87	15	15
Field Only	Illuminance	Fc	100.23	139	62.6	1.60	2.22		

LumNo	Label	X	Y	Z	Orient	Tilt
1	F5	90	200	80	261.703	56
2	F5	270	200	80	278.297	56
3	F5	90	-40	80	98.297	56
4	F5	270	-40	80	81.703	56
5	F5	90	200	80	270.63	56
6	F5	270	200	80	269.37	56
7	F5	90	-40	80	89.37	56
8	F5	270	-40	80	90.63	56
9	F5	90	200	80	281.427	56
10	F5	270	200	80	258.573	56
11	F5	90	-40	80	78.573	56
12	F5	270	-40	80	101.427	56
13	F5	90	200	80	239.036	56.842
14	F5	270	200	80	300.964	56.842
15	F5	90	-40	80	120.964	56.842
16	F5	270	-40	80	59.036	56.842
17	F5	90	200	80	230.882	55.703
18	F5	270	200	80	309.118	55.703
19	F5	90	-40	80	129.118	55.703
20	F5	270	-40	80	50.882	55.703
21	F5	90	200	80	216.403	52.6
22	F5	270	200	80	321.597	52.6
23	F5	90	-40	80	141.597	52.6
24	F5	270	-40	80	38.403	52.6
25	F5	90	200	80	297.423	56.182
26	F5	270	200	80	242.577	56.182
27	F5	90	-40	80	62.577	56.182
28	F5	270	-40	80	117.423	56.182
29	F5	90	200	80	308.956	56.503
30	F5	270	200	80	231.044	56.503
31	F5	90	-40	80	51.044	56.503
32	F5	270	-40	80	128.956	56.503
33	F5	90	200	80	314.31	55.726
34	F5	270	200	80	225.69	55.726
35	F5	90	-40	80	45.69	55.726
36	F5	270	-40	80	134.31	55.726
37	F5	90	200	80	325.376	51.914
38	F5	270	200	80	214.624	51.914
39	F5	90	-40	80	34.624	51.914
40	F5	270	-40	80	145.376	51.914
41	F5	90	200	80	311.553	55.772
42	F5	270	200	80	228.447	55.772
43	F5	90	-40	80	48.447	55.772
44	F5	270	-40	80	131.553	55.772
45	F5	90	200	80	225	54.049
46	F5	270	200	80	315	54.049

LumNo	Label	X	Y	Z	Orient	Tilt
47	F5	90	-40	80	135	54.049
48	F5	270	-40	80	45	54.049
49	F5	90	200	80	317.936	54.085
50	F5	270	200	80	222.064	54.085
51	F5	90	-40	80	42.064	54.085
52	F5	270	-40	80	137.936	54.085
53	F5	90	200	80	304.606	56.637
54	F5	270	200	80	235.394	56.637
55	F5	90	-40	80	55.394	56.637
56	F5	270	-40	80	124.606	56.637
57	F5	90	200	80	235.516	56.333
58	F5	270	200	80	304.484	56.333
59	F5	90	-40	80	124.484	56.333
60	F5	270	-40	80	55.516	56.333
61	F5	90	200	80	242.819	57.335
62	F5	270	200	80	297.181	57.335
63	F5	90	-40	80	117.181	57.335
64	F5	270	-40	80	62.819	57.335
65	F5	90	200	80	275.856	55.777
66	F5	270	200	80	264.144	55.777
67	F5	90	-40	80	84.144	55.777
68	F5	270	-40	80	95.856	55.777
69	F5	90	200	80	300.466	55.94
70	F5	270	200	80	239.534	55.94
71	F5	90	-40	80	59.534	55.94
72	F5	270	-40	80	120.466	55.94
73	F5	90	200	80	110.726	56.017
74	F5	270	-40	80	69.274	56.017
75	F5	90	200	80	249.274	56.017
76	F5	270	200	80	290.726	56.017
77	F5	90	-40	80	104.036	56.215
78	F5	270	-40	80	75.964	56.215
79	F5	90	200	80	255.964	56.215
80	F5	270	200	80	284.036	56.215
81	F5	90	-40	80	93.945	55.471
82	F5	270	-40	80	86.055	55.471
83	F5	90	200	80	266.055	55.471
84	F5	270	200	80	273.945	55.471
85	F5	90	-40	80	72.031	55.567
86	F5	270	-40	80	107.969	55.567
87	F5	90	200	80	287.969	55.567
88	F5	270	200	80	252.031	55.567
89	F5	90	-40	80	67.416	56.828
90	F5	270	-40	80	112.584	56.828
91	F5	90	200	80	292.584	56.828
92	F5	270	200	80	247.416	56.828

Illumination results shown on this lighting design are based on project parameters provided to SpecGrade LED and used in conjunction with test procedures conducted under laboratory conditions. Actual project conditions differing from these design parameters may affect field results. Values represent an approximation and actual field results may vary.



Luminaire Schedule							
Symbol	Qty	Label	Arrangement	Total Lamp Lumens	LLF	Description	Lum. Watts
□	72	F	SINGLE	114951.5	0.910	AFL-1000W-30D	1104.2

Calculation Summary									
Label	CalcType	Units	Avg	Max	Min	Avg/Min	Max/Min	PtSpcLr	PtSpcTb
Filed	Illuminance	Fc	50.09	96.8	16.2	3.09	5.98	15	15

Luminaire Location Summary					
LumNo	Label	X	Y	Z	Orient
1	F	193	166	60	35.028
2	F	193	166	60	39.413
3	F	193	166	60	61.032
4	F	193	166	60	82.716
5	F	193	166	60	86.918
6	F	193	166	60	77.567
7	F	193	166	60	65.194
8	F	193	166	60	53.366
9	F	193	166	60	42.207
10	F	193	166	60	100.597
11	F	193	166	60	72.135
12	F	193	166	60	49.635
13	F	193	166	60	68.523
14	F	193	166	60	94.764
15	F	232	477	60	257.137
16	F	232	477	60	298.238
17	F	232	477	60	278.315
18	F	232	477	60	304.303
19	F	232	477	60	317.984
20	F	232	477	60	308.418
21	F	232	477	60	272.203
22	F	232	477	60	288.025
23	F	232	477	60	322.951
24	F	232	477	60	293.025
25	F	232	477	60	312.184
26	F	518	166	60	100.568
27	F	518	166	60	108.853
28	F	518	166	60	112.62
29	F	232	477	60	262.983
30	F	232	477	60	253.129
31	F	232	477	60	249.708
32	F	232	477	60	245.066
33	F	232	477	60	326.921
34	F	193	166	60	104.813
35	F	193	166	60	91.322
36	F	487	477	60	215.816

Luminaire Location Summary					
LumNo	Label	X	Y	Z	Orient
37	F	487	477	60	228.403
38	F	487	477	60	233.871
39	F	487	477	60	239.647
40	F	487	477	60	244.612
41	F	487	477	60	250.133
42	F	487	477	60	256.608
43	F	487	477	60	262.435
44	F	487	477	60	268.647
45	F	487	477	60	278.005
46	F	487	477	60	284.789
47	F	487	477	60	291.721
48	F	487	477	60	298.124
49	F	487	477	60	301.958
50	F	487	477	60	306.254
51	F	487	477	60	312.483
52	F	518	166	60	104.359
53	F	518	166	60	129.634
54	F	518	166	60	125.233
55	F	518	166	60	121.47
56	F	518	166	60	116.402
57	F	518	166	60	97.237
58	F	518	166	60	93.604
59	F	518	166	60	88.636
60	F	518	166	60	76.504
61	F	518	166	60	72.135
62	F	518	166	60	68.362
63	F	518	166	60	63.66
64	F	518	166	60	63.825
65	F	193	166	60	57.16
66	F	518	166	60	79.492
67	F	232	477	60	282.766
68	F	487	477	60	273.576
69	F	232	477	60	299.859
70	F	193	166	60	46.219
71	F	487	477	60	222.089
72	F	518	166	60	134.377