

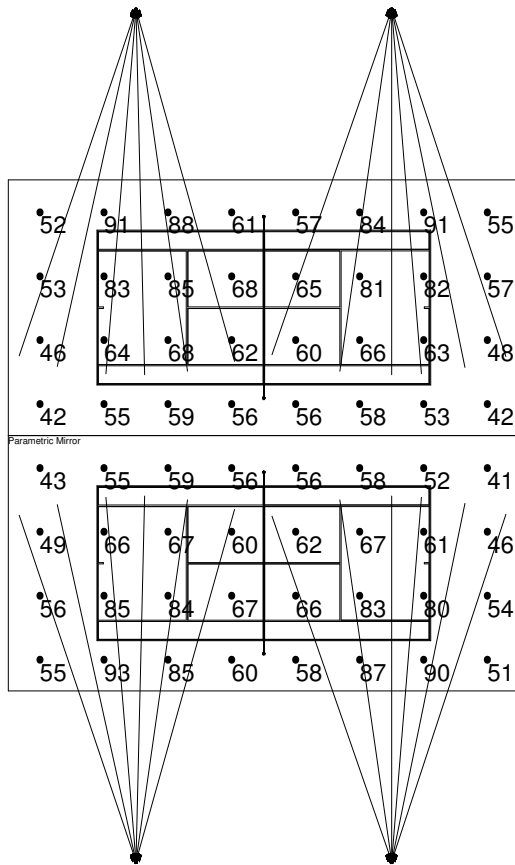
Calculation Summary							
Label	CalcType	Units	Avg	Max	Min	Avg/Min	Max/Min
PPA	Illuminance	Fc	64.11	93	41	1.56	2.27
CBA Court 1	Illuminance	Fc	70.67	85.0	60.0	1.18	1.42
CBA Court 2	Illuminance	Fc	70.58	85.0	60.0	1.18	1.42

Luminaire Schedule

Symbol	Qty	Label	Arrangement	Total Lamp Lumens	LLF	Description
	24	F1	SINGLE	86305	0.910	AFL-800-40X40-ES

Luminaire Location Summary

LumNo	Label	X	Y	Z	Orient	Tilt
1	F1	90	-40	40	71.768	65
2	F1	90	160	40	288.232	65
3	F1	90	-40	40	78.44	65
4	F1	90	160	40	281.56	65
5	F1	90	-40	40	90	65
6	F1	90	160	40	270	65
7	F1	90	-40	40	109.12	65
8	F1	90	160	40	250.88	65
9	F1	30	160	40	251.358	65
10	F1	30	-40	40	108.642	65
11	F1	30	160	40	257.542	65
12	F1	30	-40	40	102.458	65
13	F1	30	160	40	265.292	65
14	F1	30	-40	40	94.708	65
15	F1	30	160	40	271.348	65
16	F1	30	-40	40	88.652	65
17	F1	30	160	40	278.13	65
18	F1	30	-40	40	81.87	65
19	F1	30	160	40	285.668	65
20	F1	30	-40	40	74.332	65
21	F1	90	-40	40	85.292	65
22	F1	90	160	40	274.708	65
23	F1	90	-40	40	98.13	65
24	F1	90	160	40	261.87	65



CBA Court 2

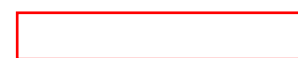
Illuminance (Fc)
Average = 70.58
Maximum = 85.0
Minimum = 60.0
Avg/Min Ratio = 1.18
Max/Min Ratio = 1.42

CBA Court 1

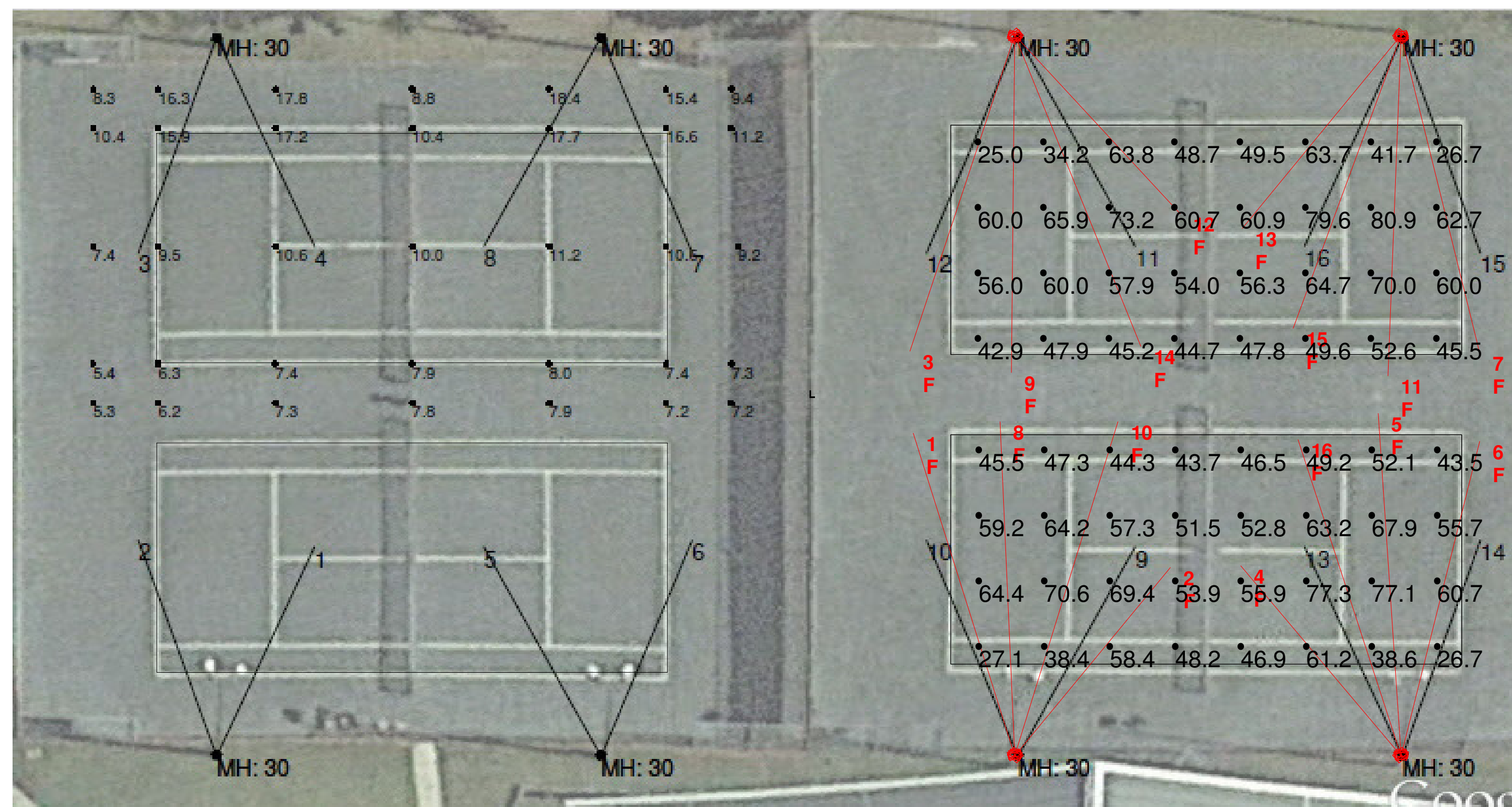
Illuminance (Fc)
Average = 70.67
Maximum = 85.0
Minimum = 60.0
Avg/Min Ratio = 1.18
Max/Min Ratio = 1.42

Notes

1. Levels shown are maintained horizontal illuminance.
2. Based on a light loss factor of .91
3. Results are shown in units of footcandles.
4. Levels shown are taken 3 feet above grade.



Illumination results shown on this lighting design are based on project parameters provided to SpecGrade LED and used in conjunction with test procedures conducted under laboratory conditions. Actual project conditions differing from these design parameters may affect field results. Values represent an approximation and actual field results may vary.



Luminaire Schedule							
Symbol	Qty	Label	Arrangement	Total Lamp Lumens	LLF	Description	Lum. Watts
□	16	F	SINGLE	43802.7	0.912	AFL40040X40	440

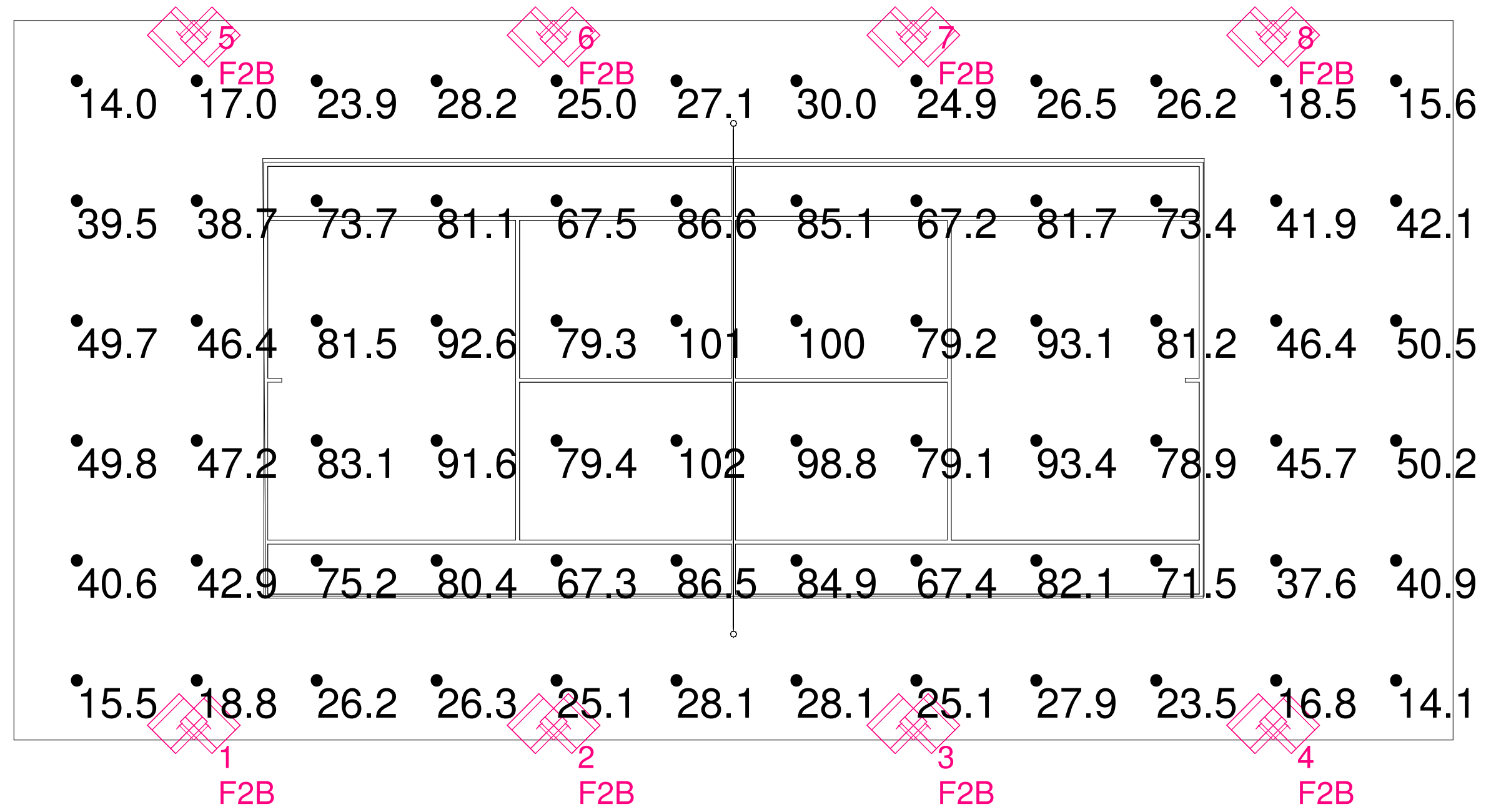
Calculation Summary									
Label	CalcType	Units	Avg	Max	Min	Avg/Min	Max/Min	PtSpcLr	PtSpcTb
North Court PPA	Illuminance	Fc	54.76	80.9	25.0	2.19	3.24	10	10
South Court PPA	Illuminance	Fc	53.71	77.3	26.7	2.01	2.90	10	10

Calculation grids 3' above courts.

Luminaire Location Summary						
LumNo	Label	X	Y	Z	Orient	Tilt
1	F	153	8	30	107.47	59.842
2	F	153	8	30	50.44	51.184
3	F	153	118	30	251.654	59.453
4	F	212	8	30	130.192	51.683
5	F	212	8	30	93.832	60.193
6	F	212	8	30	75.964	58.77
7	F	212	118	30	283.897	59.017
8	F	153	8	30	92.526	59.559
9	F	153	118	30	269.444	59.779
10	F	153	8	30	72.838	60.662
11	F	212	118	30	267.797	60.037
12	F	153	118	30	312.818	51.078
13	F	212	118	30	230.579	51.847
14	F	153	118	30	292.061	59.658
15	F	212	118	30	249.76	57.83
16	F	212	8	30	108.078	59.414

Primary Playing Area

Illuminance (Fc)
 Average = 82.68
 Maximum = 102
 Minimum = 67.2
 Avg/Min Ratio = 1.23
 Max/Min Ratio = 1.52



Illumination results shown on this lighting design are based on project parameters provided to SpecGrade LED used in conjunction with test procedures conducted under laboratory conditions. Actual project conditions differing from these design parameters may affect field results. Values represent an approximation.

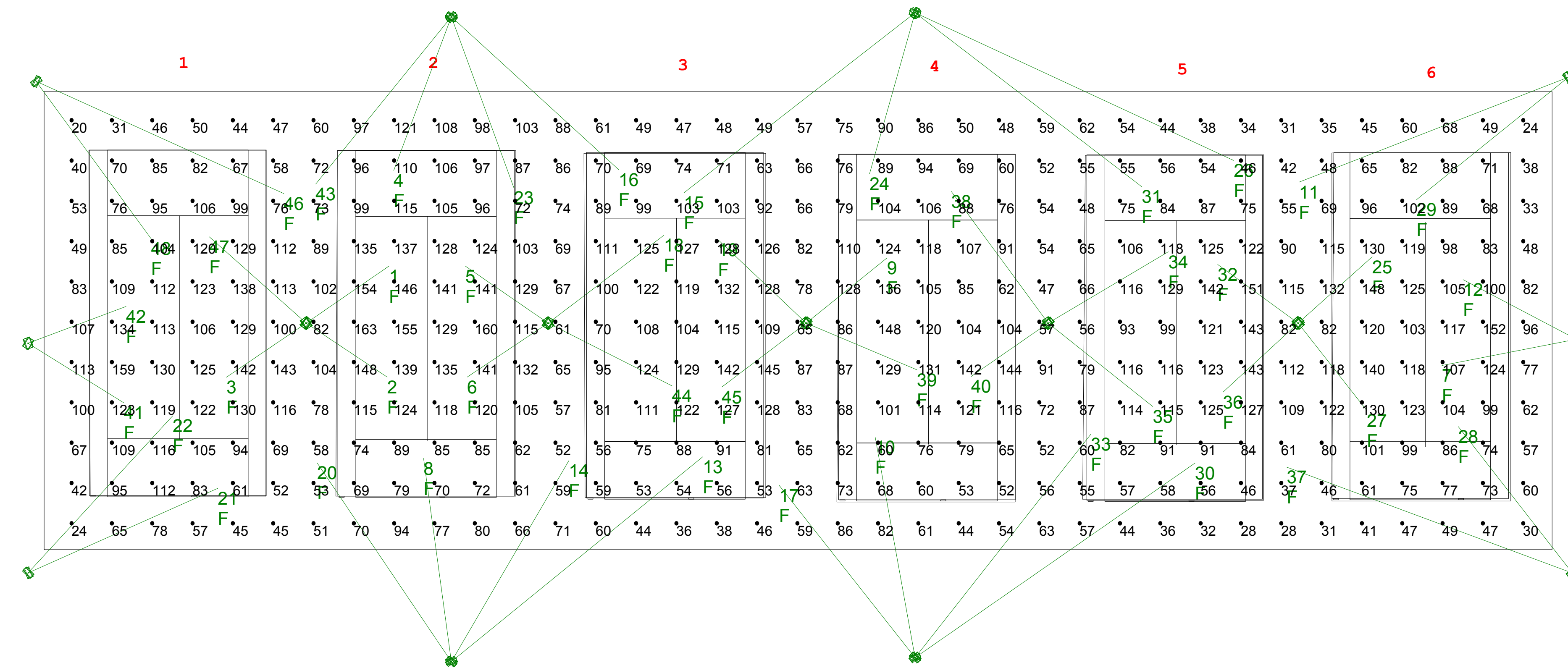
Luminaire Schedule						
Symbol	Qty	Label	Arrangement	Total Lamp Lumens LLF	Description	Lum. Watts
⬠	8	F2B	2 @ 90 DEGREES	43802.7	AFL400-40X40	440

Calculation Summary										
Label	CalcType	Units	Avg	Max	Min	Avg/Min	Max/Min	PtSpcLr	PtSpcTb	
Court Boundary Area	Illuminance	Fc	54.28	102	14.0	3.88	7.26	10	10	
Primary Playing Area	Illuminance	Fc	82.68	102	67.2	1.23	1.52			

Calculation grid 3' above playing surface.

30' Pole / 2.5' Base

Luminaire Location Summary								
LumNo	Label	X	Y	Z	Orient	Tilt	X-Aimpt	Y-Aimpt
1	F2B	15	0	32.5	90	46	15	0
2	F2B	45	0	32.5	90	46	45	0
3	F2B	75	0	32.5	90	46	75	0
4	F2B	105	0	32.5	90	46	105	0
5	F2B	15	60	32.5	270	46	15	60
6	F2B	45	60	32.5	270	46	45	60
7	F2B	75	60	32.5	270	46	75	60
8	F2B	105	60	32.5	270	46	105	60



PPA Court 1
 Illuminance (Fc)
 Average = 108.53
 Maximum = 159
 Minimum = 61
 Avg/Min Ratio = 1.78
 Max/Min Ratio = 2.61

PPA Court 2
 Illuminance (Fc)
 Average = 112.58
 Maximum = 163
 Minimum = 61
 Avg/Min Ratio = 1.85
 Max/Min Ratio = 2.67

PPA Court 3
 Illuminance (Fc)
 Average = 98.38
 Maximum = 145
 Minimum = 53
 Avg/Min Ratio = 1.86
 Max/Min Ratio = 2.74

PPA Court 4
 Illuminance (Fc)
 Average = 94.97
 Maximum = 148
 Minimum = 52
 Avg/Min Ratio = 1.83
 Max/Min Ratio = 2.85

PPA Court 5
 Illuminance (Fc)
 Average = 98.36
 Maximum = 151
 Minimum = 46
 Avg/Min Ratio = 2.14
 Max/Min Ratio = 3.28

PPA Court 6
 Illuminance (Fc)
 Average = 101.44
 Maximum = 152
 Minimum = 61
 Avg/Min Ratio = 1.66
 Max/Min Ratio = 2.49

Calculation grid 3' above Courts.
 40' Pole / 2' Base

Symbol	Qty	Label	Arrangement	Total Lamp Lumens	LLF	Description	Lum. Watts
[Symbol]	48	F	SINGLE	107882	0.910	AFL-100040X40	1100

Label	CalcType	Units	Avg	Max	Min	Avg/Min	Max/Min	PtSpcLr	PtSpcTb
Court Boundary Area	Illuminance	Fc	87.54	163	20	4.38	8.15	10	10
PPA Court 1	Illuminance	Fc	108.53	159	61	1.78	2.61		
PPA Court 2	Illuminance	Fc	112.58	163	61	1.85	2.67		
PPA Court 3	Illuminance	Fc	98.38	145	53	1.86	2.74		
PPA Court 4	Illuminance	Fc	94.97	148	52	1.83	2.85		
PPA Court 5	Illuminance	Fc	98.36	151	46	2.14	3.28		
PPA Court 6	Illuminance	Fc	101.44	152	61	1.66	2.49		

LumNo	Label	X	Y	Z	Orient	Tilt	X-Aimpt	Y-Aimpt
1	F	65	57	42	34.574	30.699	85.533	71.151
2	F	65	57	42	326.303	29.871	85.07	43.617
3	F	65	57	42	214.171	29.67	45.203	43.561
4	F	101	133	42	249.459	44.134	86.702	94.842
5	F	125	57	42	145.426	30.699	104.467	71.151
6	F	125	57	42	213.697	29.871	104.93	43.617
7	F	380	53	42	191.071	38.966	346.662	46.477
8	F	101	-27	42	97.779	50.464	94.113	23.416
9	F	189	57	42	38.913	31.496	209.023	73.164
10	F	216	-26	42	100.246	52.92	206.115	28.689
11	F	378	118	42	201.298	59.64	311.196	91.957
12	F	380	53	42	152.271	37.095	351.888	67.777
13	F	101	-27	42	39.188	62.431	163.35	23.829
14	F	101	-27	42	59.705	53.974	130.134	22.866
15	F	216	134	42	217.93	59.973	158.683	89.332
16	F	101	133	42	317.569	53.235	142.491	95.072
17	F	216	-26	42	128.25	52.374	182.268	16.789
18	F	125	57	42	37.202	40.637	153.71	78.794
19	F	189	57	42	136.585	35.637	167.128	77.694
20	F	101	-27	42	124.016	54.781	67.716	22.316
21	F	-4	-5	42	24.055	50.832	43.078	16.015
22	F	-4	-5	42	47.372	51.605	31.894	33.996
23	F	101	133	42	290.06	47.056	116.479	90.61
24	F	216	134	42	254.204	44.693	204.689	94.017
25	F	311	57	42	41.864	30.411	329.359	73.452
26	F	216	134	42	335.115	64.266	295.047	97.333
27	F	311	57	42	308.125	33.316	328.043	35.284
28	F	379	-5	42	127.921	47.632	350.7	31.325
29	F	378	118	42	218.892	49.025	340.361	87.638
30	F	216	-26	42	34.812	63.581	285.408	22.261
31	F	216	134	42	322.481	59.339	272.191	90.853
32	F	311	57	42	143.935	30.463	291.031	71.543
33	F	216	-26	42	51.824	59.237	259.611	29.468
34	F	249	57	42	30.72	39.529	278.795	74.705
35	F	249	57	42	321.409	38.335	274.959	36.284
36	F	311	57	42	222.574	31.088	292.351	39.867
37	F	379	-5	42	159.656	60.931	308.158	21.267
38	F	249	57	42	126.328	44.009	224.965	89.686
39	F	189	57	42	337.113	35.344	216.441	45.416
40	F	249	57	42	214.736	28.94	229.915	43.767
41	F	-4	52	42	328.108	33.686	19.77	37.209
42	F	-4	52	42	20.579	31.737	20.32	61.131
43	F	101	133	42	230.969	51.841	67.34	91.479
44	F	125	57	42	333.106	39.343	155.706	41.426
45	F	189	57	42	217.148	32.001	168.08	41.151
46	F	-2	117	42	335.607	58.101	59.454	89.132
47	F	65	57	42	138.31	37.451	40.976	78.397
48	F	-2	117	42	306.157	49.04	26.546	77.935